



Meet Your Sustainability Goals with Arable

Arable is advancing sustainability and climate resilience in agriculture with cutting-edge technology that powers informed agronomic decisions. With Arable's comprehensive, real-time data and crop insights—delivered from the field to any device—users can optimize their practices, conserving resources, minimizing environmental impact, and promoting long-term agricultural success.

Simple, All-In-One System
(Weather, Plant, Soil, and Irrigation)

Trusted In-Field Data

Actionable Insights

Proven Business Value



Arable was Named the
#1 Sustainability-Focused
Company in AgTech (2024)



Conserve Water

Increase water use efficiency by irrigating precisely to the crops' needs with real-time insights into each field's unique water requirements.



Increase Climate Resilience

Leverage holistic in-field data to understand new weather patterns and mitigate potential crop damage by proactively preparing for extreme weather events.



Reduce Carbon Emissions

Minimize the carbon footprint of agricultural activities by optimizing farming practices, such as reducing unnecessary machinery runs and fewer trips to distant fields.



Arable Transforms In-Field Data Into Actionable Insight



The Right In-Field Data, Made Easy

A single, maintenance-free device captures in-field weather, soil, plant, and irrigation data.



Agronomic Intelligence Generated in the Cloud

Powerful agronomic models and machine learning transform real-time data into actionable insights.



Actionable Insights On Any Device

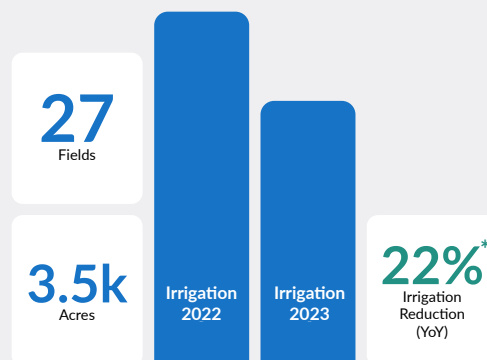
Crop insights are available any time, from anywhere via web, mobile, and API.

Using Arable, Paulman Farms Reduced Irrigation by 22%

Paulman Farms—a 6,000 acre family operation in Nebraska—used Arable to identify field-specific water needs and rainfall amounts for 27 fields. Based on the Arable insights, Paulman Farms implemented multiple changes to their irrigation strategy resulting in a significant reduction in water use and energy.

"In my 39 years of farming, this is the most revolutionary step I've seen in irrigation. Arable brings together the data needed to inform and support irrigation decisions. Those choices have significant impacts on natural resources in terms of quantity as well as quality."

Roric Paulman, Paulman Farms



Advancing Sustainability Around the World

Arable partners with global food and agriculture leaders to digitize operations for greater sustainability and productivity.



Google and Arable are collaborating to bring an innovative water stewardship solution to Nebraska that helps Google meet water replenishment goals and aids a water-stressed region.



With the support of the Bonsucro Impact Fund, Raizen's Pulse Innovation Hub and Arable are working together to make sugarcane production more sustainable.



Shell International Exploration and Production Inc., Arable, HabiTerre, and Quanterra Systems, are developing a high-trust, low-cost carbon measurement and verification system to advance sustainable farming.



Bill & Melinda Gates Foundation Grant is funding a project including Arable, TomorrowNow, and others to help African farmers adapt to climate change.

